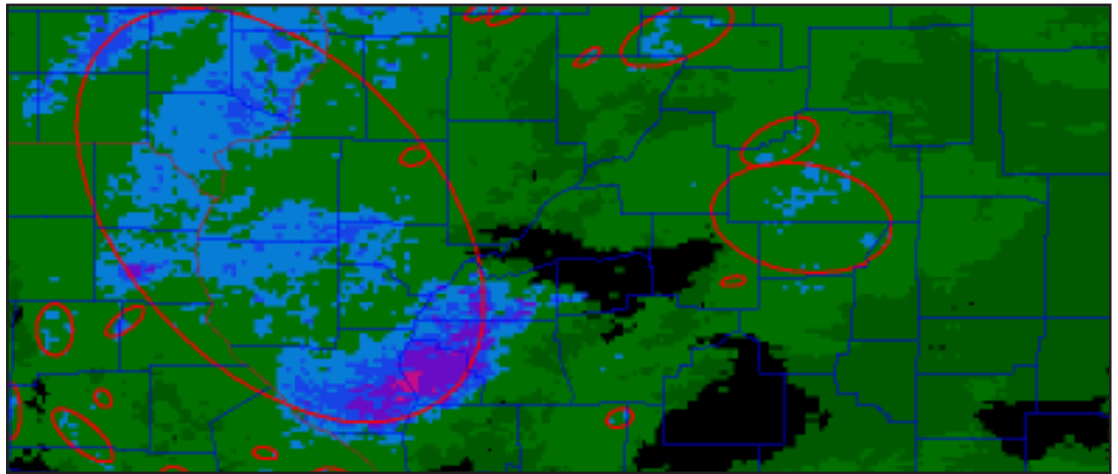


# Storm Properties Analysis



## Product Overview

OneRain's unique historical 15-minute, 2 km x 2 km radar-rainfall database covering the entire continental US extends from 1993 to the present. With approximately ten years of high resolution spatially distributed rainfall estimates available, unprecedented opportunities exist to study the spatial structure of storms. Information gleaned from this database has the potential to impact every hydrologic design standard in the US, affect the way rain gage networks are designed, and reveal linkages between the spatial variability of rainfall and population distributions of plant and animal species.

Using technology licensed from the National Center for Atmospheric Research, OneRain can identify, track, and evaluate millions of individual storm cells. Spatially oriented data for peak rainfall intensities, storm cell sizes, storm cell directions, storm activity, storm cell genesis, rainfall contours, etc. are just a few of the storm cell properties available.

Storm properties can be evaluated for user-defined for time periods (e.g. 15-minute, 1-hour, 3-hour, 6-hour etc).

## Specifications

- National historical database of 2 km x 2 km, 15-minute data archived back to 1993
- National historical database of 1 km x 1 km, 5-minute data archived back to 2002
- User-specified study area

## Features

- Storm size
- Max intensity
- Storm cell direction
- Storm cell speed
- Minor storm cell axis
- Major storm cell axis
- Depth-area relationships
- Storm cell duration
- Number of starts
- Storm cell activity

## Benefits

- Refine hydrologic design standards impacting billions of dollars of constructed facilities
- Improved understanding of storm climatology
- Improved rain gage network design
- Improved understanding of linkages between land surface processes, plant populations, animal populations and atmospheric process.



### HEADQUARTERS

1531 Skyway Drive  
Unit D  
Longmont, CO 80504

T: 303-774.2033

F: 303-774.2037

### CALIFORNIA

9267 Greenback Lane  
Suite C4  
Orangevale, CA 95662

T: 916.988.2771

F: 916.988.2769

### VIRGINIA

2308 Mount Vernon Ave  
#715  
Alexandria, VA 22301

T: 703.200.6955

F: 916.988.2769

[www.onerain.com](http://www.onerain.com)

[information@onerain.com](mailto:information@onerain.com)