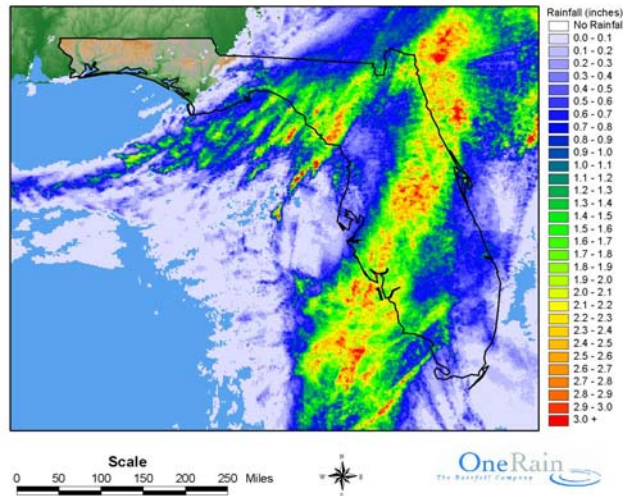


GAGE-ADJUSTED RADAR RAINFALL REAL-TIME DATA AND HISTORICAL ANALYSIS

Gage-Adjusted Radar Rainfall Estimates Hurricane Charley



Storm Total Graphic of Hurricane Charley over the State of Florida

Gage-Adjusted Radar Rainfall (GARR) marries rain gage estimates at a point with the spatial distribution information from the National Weather Service NEXRAD radars to give us information about what is happening between the gages. The rain gage data are used to calibrate the radar and generate rainfall estimates for each 1-km or 2-km pixel, depending upon the resolution of the data that is used. GARR data are used in flood warning, runoff modeling, I/I studies, litigation, real-time control, design storms and National Pollutant Discharge Elimination System (NPDES) compliance activities.

OneRain collects and stores a nationwide mosaic of radar information every five and fifteen minutes. Historical records of the national mosaics are maintained in the OneRain Harbor (Databases):

- ◆ 2-km, 15-minute data from 1993 to the present
- ◆ 1-km, 5-minute data from 2002 to the present

OneRain's customers often supply the rain gage data used in the radar rainfall analysis or OneRain will try to obtain gage data from other sources. In a real-time operation, OneRain uses data supplied by the customer from a real-time telemetry system.

Real-time Data Service – OneRain uses real-time radar data from its vendors and real-time rain gage data from its customers to calibrate the radar data and deliver rainfall data immediately back to the customer in a variety of formats for decision support.

Historical Data Service – The OneRain Harbor is used to provide data for post-event analysis or model quality datasets. OneRain extracts radar data from its database, receives or finds data for the appropriate study area, QA/QCs both data sets, calibrates the radar, and delivers the results to the customer in an agreed format. Delivery options include basin averages, animations, comma-delimited text, spreadsheet, reports or model-specific formats.



EXPERTS MEASURING RAINFALL AND ITS CONSEQUENCES



HEADQUARTERS

1531 Skyway Drive
Unit D
Longmont, CO 80504

800-758-RAIN
303.774.2033
Fax: 303.774.2037

VIRGINIA

2308 Mount Vernon Ave
#715
Alexandria, VA 22301

703.200.6955
FAX: 703.997.3074

www.onerain.com
information@onerain.com